



UCLA LAKE ARROWHEAD LODGE



FRESH AIR. FRESH IDEAS.

◆ GET AWAY AND GET INSPIRED AT UCLA'S MOUNTAINTOP RETREAT. ◆

Located on the north shore of beautiful Lake Arrowhead — just 90 miles east of Los Angeles — the UCLA Lake Arrowhead Lodge's awe-inspiring natural surroundings create a unique environment for conferences and retreats. It's the perfect destination for training, team building, planning, or holding a think-tank — whatever it is you need to accomplish!

COMPLETE MEETING PACKAGE (CMP) – Our CMP includes the following at “per person, per night” package rates beginning with your guests’ arrival and check-in, continuing through the end of your meeting on check-out day:

- Comfortable, well-appointed, resort-like guest rooms
- Meeting space includes general session and breakout rooms based on group size, with audio visual equipment, and highspeed wireless internet (Wi-Fi)
- Three chef-prepared meals per day, with hearty buffet selections for breakfast and lunch, and an elegant four-course served dinner in the evening
- Continuous refreshment break service, including coffee, hot tea, iced tea, lemonade, and iced water
- Conference coordinator and Lodge attendant available to assist with meeting support services
- On-site recreation and fitness facilities, including outdoor activities

OVERNIGHT ACCOMODATIONS (Part of CMP) – Sleeps 180+ Guests (below is one guest per bed):

- 67 two-bedroom, two-bath Chalet.....134 Guests
- 7 two-bedroom, one-bath Chalet.....14 Guests
- 6 vintage cottage singles, one bath.....8 Guests
- 1 four-bedroom, three-bath house — Briar Creek.....10 Guests
- 1 three-bedroom, two-bath house — Geneva.....6 Guests
- 1 three-bedroom, two-bath cottage — Willow Creek.....8 Guests
- Most rooms have in-room wood-burning fireplaces, decks with beautiful mountain or lake views, and sleeper sofas
- Personal voicemail and DID line for incoming calls, plus free local calls and free Wi-Fi
- A well-lighted desk with multiple electrical outlets and USB ports
- Iron, ironing board, blow dryer, and extra pillows and blankets in each guest room



UCLA LAKE ARROWHEAD LODGE

MEETING SPACE (Part of CMP)

- 10,000 square feet of meeting space with 13 meeting rooms; our largest room accommodates up to 200 guests
- Most meeting rooms feature high ceilings, no pillars, natural light, and fireplaces
- All meeting rooms feature complimentary Wi-Fi, and our on-site lodge attendant is available to assist with meeting room set-ups to help you maximize your audio visual needs.

FOOD AND BEVERAGE SERVICE (Part of CMP)

GROUP DINING

Group and private dining rooms, cozy lounge areas, fireplaces, and sumptuous food provide an exceptional dining experience for conference attendees. All dining rooms adjoin each other.

- Dining Room One.....Seats 66 max.
- Dining Room Two.....Seats 93 max.
- Dining Room Three.....Seats 40 max.
- Outside Patio Deck for Dining (seasonal).....Seats 212 max.

MEETING ROOM BREAKS

- Continuous refreshment break service includes coffee, hot tea, iced tea, lemonade, and iced water
- Snacks, hors d'oeuvres, and soft drinks are available at an additional cost

BAR SET-UPS

The UCLA Lake Arrowhead Lodge, as a state agency, cannot sell or provide alcoholic beverages. We do, however, allow you to bring your own social beverages (alcoholic or nonalcoholic) — in bottles and cans only please, no kegs. At your request, we will provide a complimentary social room set-up (ice and glasses) before or after dinner

RECREATION

FITNESS AND FUN

- Four tennis courts, two basketball half-courts, and one beach sand volleyball court, and a shuffleboard court
- Outdoor heated pool (seasonal) and indoor 14-seat hot tub with fireplace
- State-of-the-art Fitness Center — open 24 hours
- Softball field with all equipment included (additional fee)
- Jogging paths in Lake Arrowhead's natural wooded areas

TEAM BUILDING (additional fee)

- Bruin Chef Challenge — teams of 5-10 group members must exercise teamwork and communication to impress the judge — one of our own award-winning chefs
- Hiking and mountain-biking — just steps from the Lodge
- Facilitated Corporate Team Building Program, which includes our on-site ropes challenge course, building leadership, relationships, and trust

LODGE AMMENITIES

- Main Lodge open daily from 6:00 a.m. – 12:00 midnight; Front Desk opens at 7:00 a.m.
- Complimentary coffee, hot tea, iced water, and fresh whole fruit provided in the Main Lodge lobby
- Complimentary Wi-Fi throughout the property
- Business Center services located at the Front Desk include copying, printing, faxing, scanning, and complimentary laptop usage (based on availability)
- Gifts available at the Front Desk
- Ping pong tables located on the 2nd floor outdoor deck (seasonal)
- Complimentary on-site parking
- On-site electric vehicle charging stations (fees apply)
- Laundry room with 24-hour access
- 100% Linen-free 🌱

LOCATION OF THE LODGE

The Lodge is located 90 miles east of Los Angeles, and is a convenient drive from most major cities and airports in Southern California. Locally, the Lodge is only four miles from Lake Arrowhead Village, where visitors can enjoy outlet shopping and specialty stores.







UCLA LAKE ARROWHEAD LODGE

EST. 1922

MEETING SPACE CAPACITY CHART



Lakeview Classroom Style



Iris U-Shape Style



Pineview Classroom Style

MEETING SPACE SUMMARY

- Total Meeting Rooms 13
- Total Square Footage 10,000
- Largest Indoor Meeting Space (sq.ft.) 1,512
- Maximum Group Capacity 200 (in largest room)
- On-site Team Building Activities

MEETING SPACE HIGHLIGHTS

- On-site Dining
- Complimentary Wi-Fi Throughout the Property
- Business Center
- Audio Visual Capabilities; Video Conferencing
- No Pillars for Unobstructed Interior Views
- Mountain and Lake Views
- Outdoor Decks
- Fireplaces in Most Rooms
- Linen-free ♻️

The UCLA Lake Arrowhead Conference Center features over 10,000 square feet of meeting space with 13 meeting rooms, with the largest room accommodating up to 200 guests. Meeting rooms feature high ceilings, no pillars for unobstructed interior views, natural light, and many have fireplaces. All meeting rooms feature complimentary Wi-Fi, and our on-site lodge attendant is available to assist with meeting room set-ups to help you maximize your audio visual needs.

PRIMARY MEETING SPACE

MEETING ROOM	SQUARE FEET	THEATER STYLE	CLASSROOM STYLE	U-SHAPE	CONFERENCE TABLE	TABLE GROUPS	SOCIAL ROOM	# POSTER BOARDS	FIREPLACE	BUILT-IN BAR	DECK/PATIO	COMBO SLEEP/MEET	ADA ACCESS
Pineview	1,512	200	100	36	42	96	200	40	Yes	No	Yes	No	Yes
Iris	1,080	110	66	36	36	64	110	24	Yes	Yes	Yes	No	Yes
Lakeview	943	90	54	30	30	40	90	24	No	Yes	Yes	No	Yes
Skyview	460	30	20	17	15	16	20	12	Yes	No	Yes	No	Yes
Library	504	40	24	21	18	16	20	14	No	No	No	No	Yes
Tavern	560	45	30	24	24	32	60	20	Yes	Yes	Yes	No	Yes
Alumni Room	713	60	33	24	24	40	50	20	No	No	Yes	No	Yes
Outdoor Amphitheater	3,408	350	—	—	—	—	—	—	—	—	—	—	Yes

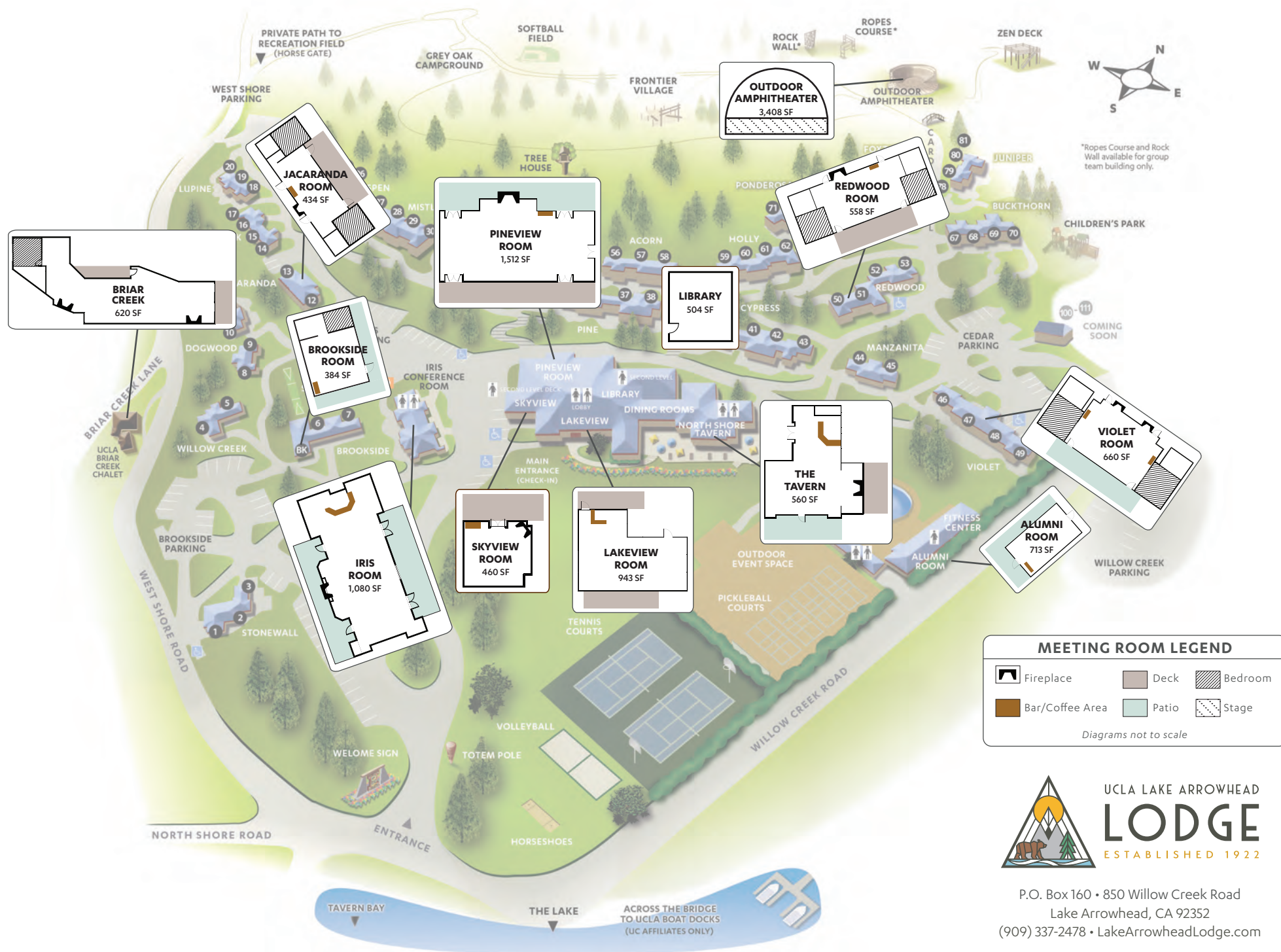
Outdoor meeting space. No audio visual capabilities.

SECONDARY MEETING SPACE

ADA accessible sleeping rooms that can be used as breakout space.

Violet	660	45	30	24	30	24	40	12	Yes	No	Yes	Yes	Yes
Redwood	558	40	24	21	24	18	30	10	Yes	No	Yes	Yes	Yes
Jacaranda	434	30	18	18	18	24	20	8	Yes	No	Yes	Yes	Yes
Brookside	384	20	18	15	18	18	20	12	No	No	Yes	Yes	Yes
Briar Creek	620	25	18	15	12	16	12	—	Yes	No	Yes	Yes	No

MEETING ROOM LOCATIONS & FLOORPLANS





UCLA LAKE ARROWHEAD
LODGE
EST. 1922

AUDIO VISUAL SERVICES



Iris Classroom Style with Easel, Podium and Projector



Lakeview U-Shape Style with Podium and Projector



Remote Work Capabilities

ASSISTIVE LISTENING SYSTEM

The Lodge has one meeting space with an assistive listening system for guests that may be hearing impaired. If your event requires this system, please inform your Sales Manager when booking.

BLUETOOTH & AUXILIARY CABLE CONNECTIONS

These items are in most meeting spaces and are available upon request for you to connect your device to during your event.

DVD & BLUE-RAY PLAYERS

Built in DVD and Blue-Ray players are available in most meeting spaces.

WIRELESS INTERNET

Complimentary high-speed wireless internet is available throughout the property and in all meeting spaces.

EASELS, FLIPCHARTS & WHITE BOARDS

All easels can be used as a whiteboard or flipchart; markers are always provided. Easels can also be used for poster sessions.

MICROPHONES AND SOUND SYSTEMS

Our larger meeting spaces have built-in microphone(s) and sound systems used for public address. Wireless handheld and wireless lapel microphone(s) are also available. A panel microphone system is available in our largest meeting spaces.

PROJECTORS & TELEVISIONS

Our larger meeting spaces offer projection onto an oversized screen while our smaller meeting spaces offer flat screen televisions to show your presentation.

PODIUMS

Podiums with electrical outlets and light are available in our largest meeting spaces or upon request.

LASER POINTERS & WIRELESS PRESENTERS

Laser pointers and wireless presenters are available for check-out at the Front Desk.

VIDEO CONFERENCING & BROADCASTING

For an additional fee, we offer Zoom video conferencing and broadcasting in most meeting spaces. If you are interested or your event requires this service, please inform your Sales Manager when booking.



UCLA LAKE ARROWHEAD LODGE

GUEST HOUSES

❖ BRIAR CREEK CHALET ❖



Sleeps up to 10 people in four bedrooms. The master bedroom has a king bed; two bedrooms each have one queen bed; and a fourth bedroom has two queen beds. Includes 3 baths, fully-equipped kitchen, living room, dining room, and multiple decks with mountain views.

❖ WILLOW CREEK HOUSE ❖



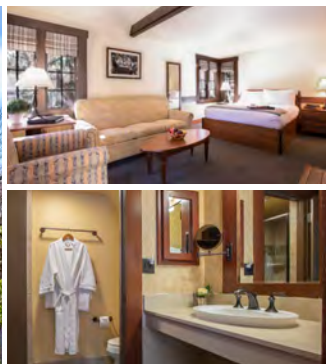
Sleeps up to 6 people in three bedrooms, each with a queen bed. Includes 2 baths, a living room, kitchenette, and fireplace.



UCLA LAKE ARROWHEAD LODGE

GUEST ROOMS

◇ OPEN CHALET ◇



OPEN CHALET – 2BD/2BA SAMPLE FLOORPLAN



Escape to nature with friends or family in this two-bedroom open-concept condolet. The first floor features a queen bed in a living room studio with private bathroom and fireplace, while the second floor offers a loft-style bedroom with queen bed and private bathroom.

◇ PREMIUM CHALET ◇



PREMIUM CHALET – 2BD/2BA SAMPLE FLOORPLAN



Feel at home in this extra spacious two-bedroom condolet, with a private queen bedroom and bath on the first floor, plus a second-floor loft with private bath, queen and twin bed. After a day exploring the Lake Arrowhead Lodge, enjoy a beverage next to your wood-burning fireplace.

◇ DELUXE CHALET ◇



DELUXE CHALET – 2BD/2BA SAMPLE FLOORPLAN



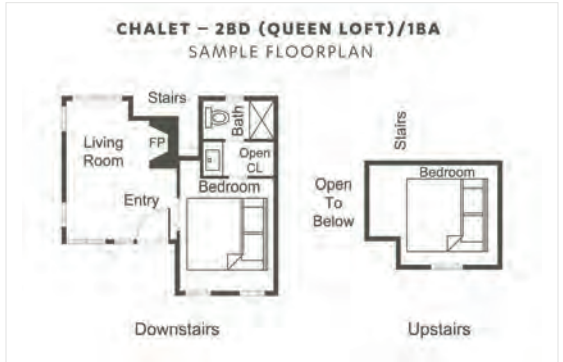
A cozy space with two spacious sleeping rooms. With a private queen bedroom and bathroom downstairs, and a queen bed loft with private bathroom upstairs, a peaceful night's sleep awaits. This chalet also features a full living room and a wood-burning fireplace for added ambiance.



UCLA LAKE ARROWHEAD LODGE

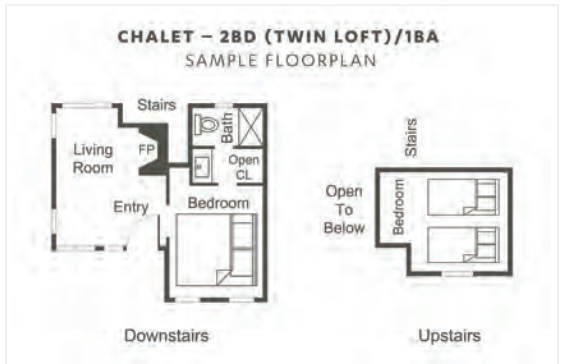
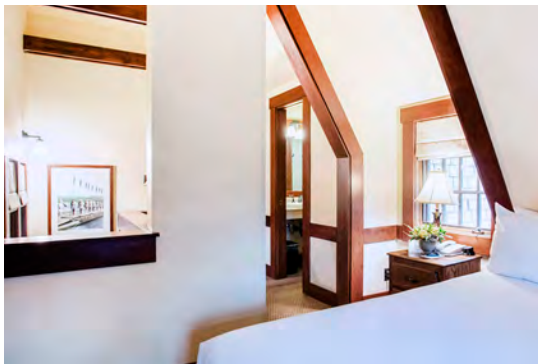
GUEST ROOMS

◆ CHALET WITH QUEEN LOFT ◆



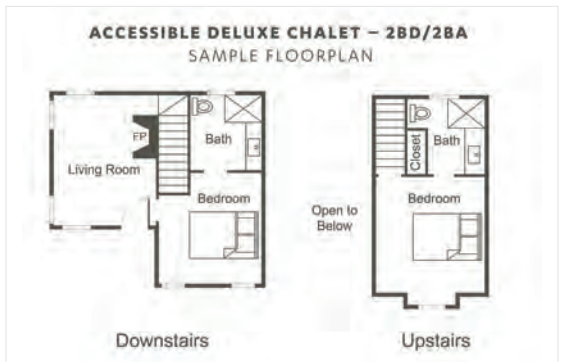
Featuring a queen bedroom, bathroom and wood-burning fireplace on the first floor, plus a second queen bed in an upstairs loft, this chalet is the perfect place to call home while at Lake Arrowhead.

◆ CHALET WITH TWIN LOFT ◆



This chalet features a queen bedroom, bathroom and wood-burning fireplace downstairs, plus two twin beds in a second-story loft for extra guests. Fill your days with activity and adventure, and your nights with rest and relaxation.

◆ ACCESSIBLE DELUXE CHALET WITH QUEEN LOFT ◆



With a private queen bedroom and bathroom downstairs, and a queen bed loft with private bathroom upstairs, a peaceful night's sleep is found. This ADA-compliant chalet also features a full living room and a wood-burning fireplace for added ambiance.



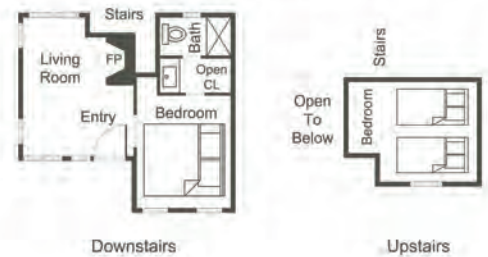
UCLA LAKE ARROWHEAD LODGE

GUEST ROOMS

◇ ACCESSIBLE CHALET WITH TWIN LOFT ◇



ACCESSIBLE CHALET – 2BD (TWIN LOFT)/1BA
SAMPLE FLOORPLAN



This ADA-compliant condolet features a queen bedroom, bathroom and wood-burning fireplace downstairs, plus two twin beds in a second-story loft for extra guests. Fill your days with activity and adventure, and your nights with rest and relaxation.

◇ VINTAGE SINGLE DELUXE ◇



VINTAGE SINGLE DELUXE
SAMPLE FLOORPLAN



Unwind in this vintage cottage, which features a queen bed and an expanded living room for lounging and relaxing after a day of adventure in Lake Arrowhead. Lake life has never been so good.

◇ VINTAGE SINGLE ◇



VINTAGE SINGLE SAMPLE FLOORPLAN



For those seeking to experience cottage life in the mountains, a vintage single cottage is ideal. Featuring a queen bed, this cottage is a comfortable place to return to after a long day of exploring the Lake Arrowhead Lodge and its surrounding area.



UCLA LAKE ARROWHEAD LODGE

EST. 1922

TRANSPORTATION OPTIONS

The following companies offer service from the Los Angeles International (LAX) and Ontario (ONT) Airports to the Lodge. Please call for current rates, reservations, and snow tire chain arrangements.

◆ B&W LIMO*

(818) 599-0438 – Alina Wade
Web: bwlimos.com
Email: alina@bwlimos.com
For 3 to 55 passengers. Transports in all weather conditions; good in snow.

◆ EBMEYER CHARTER AND TOUR*

(760) 247-8727
Web: ebmeyercharter.com
Will only put on chains to *get out* of snowy conditions, will not put on chains to drive into the snow/up the mountain.

◆ LUX BUS AMERICA

(714) 678-8800
Email: sales@luxbusamerica.com
Experienced with snowy conditions.

◆ CORPORATE COACH CHARTER & TOURS

(310) 216-1171
Web: ccctours.com
Experienced with snowy conditions.

◆ PRIME TIME SHUTTLE*

(800) 733-8267
Web: primetimeshuttle.com
Sedan and bus services.
Experienced with snowy conditions.

◆ BLACK TIE LIMO

(818) 366-1271
Web: blacktielosangeles.com
For 3 to 55 passengers.
Experienced with snowy conditions.

◆ LAKE ARROWHEAD TAXI

(909) 744-4515
Web: lakearrowheadtaxi.com
Transportation locally or to the bottom of the mountain (to meet Uber/Lyft as they often do not drive to Lake Arrowhead).

◆ ULTIMATE LIMOUSINE

(800) 249-1466
Web: alimorentalservice.com
Town car, sedan, SUV, passenger van (15 people); limousine (6–10 people); SUV limo (12–20 people); and party bus (20–40 people) services.

◆ A+ MOUNTAIN RIDE SERVICES

(909) 500-2994
Web: aplusmountainride.com

* These companies are most familiar with our mountain location.

Note: Overlength buses and motorhomes are subject to restricted routes through our mountain areas.
Please refer to page two for additional information.



UCLA LAKE ARROWHEAD
LODGE
EST. 1922

OVER-LENGTH BUS & MOTORHOME RESTRICTED ROUTES

BUS & MOTORHOME VEHICLES

The terms “over-length bus” and “motorhome” apply to single-unit buses and motorhomes that are 40 feet in length or more. Restricted routes can be viewed on the Caltrans website.

MAP

For the *Over-Length Bus & Motorhome Map*, please visit the below link.
Please click on the corresponding district link for San Bernardino District 8.

Each map file will show the route guidelines for over-length vehicles.

<https://dot.ca.gov/programs/traffic-operations/45-buses-motorhomes/bus-map>

LIST

For the *Over-Length Bus & Motorhome List*, see the table below.
The route segments below should match the red routes on the map web page.
These red routes are off limits to over-length buses and motor homes.

BEGIN			END	ROUTE LENGTH	DESCRIPTION	
RTE	COUNTY	PM	PM	MILE	BEGIN	END
18	San Bernardino	9.2	65.8	56.2	S. JCT of Old Waterman Canyon Rd. near Arrowhead Springs Rd. in San Bernardino	Marble Canyon Rd. near Camp Rock Rd.
138	San Bernardino	15.2	37.8	21.7	RTE 15	JCT 18 — End of route
173	San Bernardino	0.0	23.0	24.9	RTE 138 North of Silverwood Lake	JCT RTE 18 South of Lake Arrowhead



UCLA LAKE ARROWHEAD
LODGE
ESTABLISHED 1922

P.O. BOX 160, 850 WILLOW CREEK ROAD, LAKE ARROWHEAD, CA 92352 **T:** (909) 337-2478
F: (909) 337-1030 **E:** UCLALAKEARROWHEAD@HA.UCLA.EDU **W:** LAKEARROWHEADLODGE.COM

THINGS TO DO & KNOW...

PLAY:

- **Pickleball** — Enjoy our new Pickleball Plaza, which boasts four permanent pickleball courts. Adjacent to the pool area.
- **Basketball, Tennis, Volleyball, Football and Soccer** — Equipment located at the tennis courts
- **Board Games** — Located in the main lobby — honor system for borrowing
- **Bocce Ball** — Play bocce on the lawn; check out equipment at the front desk
- **Golf** — Enjoy our putting green located near the flag pole — check out putters and golf balls at the front desk
- **Horseshoes** — Located near the volleyball court; check out equipment at the front desk
- **Shuffleboard** — Located outdoors next to the Brookside building; check out equipment at the front desk

SEE THE SIGHTS:

- **Dock Access** — Escorts to our docks are available four times daily: 7am, 9am, 10:30am, and 5:30pm. Meet with waterfront staff at the horseshoe pit
- **History Walk** — Explore the property to learn more about Lake Arrowhead and The Lodge; maps are available near the front desk
- **Zen Deck** — Located on the upper edge of the property with the best view of the lake
- **Treehouse** — Enjoy a picnic or simply relax under our amazing treehouse nestled in the forest
- **Local Trails** — Download the [Alltrails](#) app for more information — an Adventure Pass is required and can be checked out at the front desk
- **Stargazing** — Lay on the front lawn under the night sky; download a free astronomy app such as [Sky View Lite](#) or [Star Discovery Night Sky](#)

RELAX OR WORKOUT:

- **Fitness Center** — State-of-the-art equipment with 24/7 access with your room key
- **Indoor Hot Tub** — Relax in our indoor hot tub from 6am–midnight
- **Swimming Pool** — Enjoy the pool from 9am–5pm; be sure to bring a pool towel as those are not provided
- **Firepit** — Enjoy the warmth of a fire on our Main Lodge front patio; prepackaged s'mores kits are available for \$14 at the front desk
- **Hammock Park** — Relax in the fresh air at Hammock Park; located at the ball field

MAIN LODGE:

- **The Main Lodge** — Opens daily at 6am and closes at midnight
- **Coffee Service** — Complimentary coffee 6am–9pm; whole fruit available daily in the lobby
- **Front Desk** — Staffed daily from 7am–midnight
- **Laundry Room** — Complimentary washers and dryers are located across from the Iris meeting room
- **Ice** — Ice machines are in the laundry room and near the Tavern; both are located within the Main Lodge
- **Overnight Shift** — We are staffed 24 hours a day — for assistance, please dial '0' from any phone on property
- **Vending Machine** — Snacks available in the vending machine near the Tavern

GIFT SHOP:

- The Front Desk features a limited selection of clothing and souvenirs for you to choose from.

DINING:

- **See menus online** — lakearrowheadlodge.com/dine

• Breakfast

Buffet: 8am–9am

• Lunch

Buffet: 12pm–1pm

• Dinner

Dinner served: 6:30pm–8pm

WI-FI AND BUSINESS CENTER:

- **Business Center** — Located in the Main Lodge Living Room
- **Copies/Printing** — See Front Desk for assistance
- **Wi-Fi** — Complimentary wireless Internet throughout the property; no password required